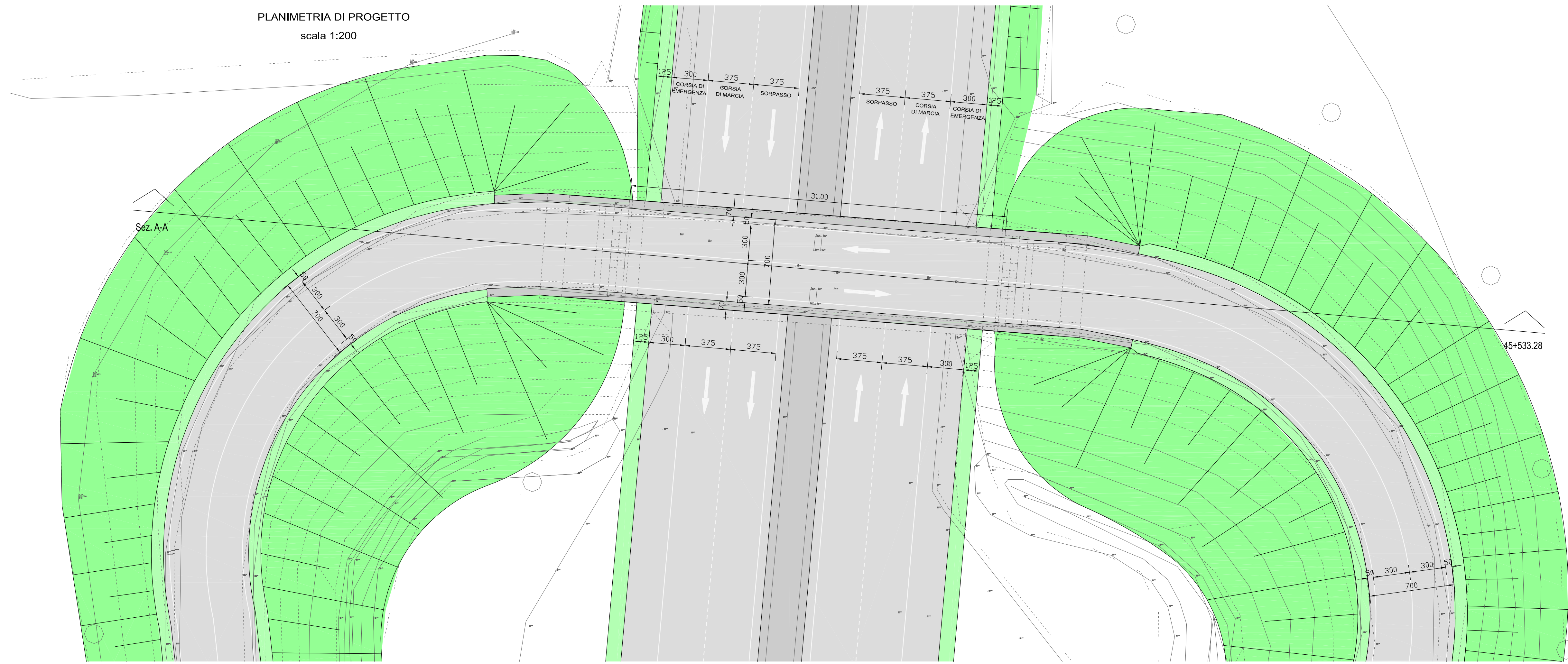
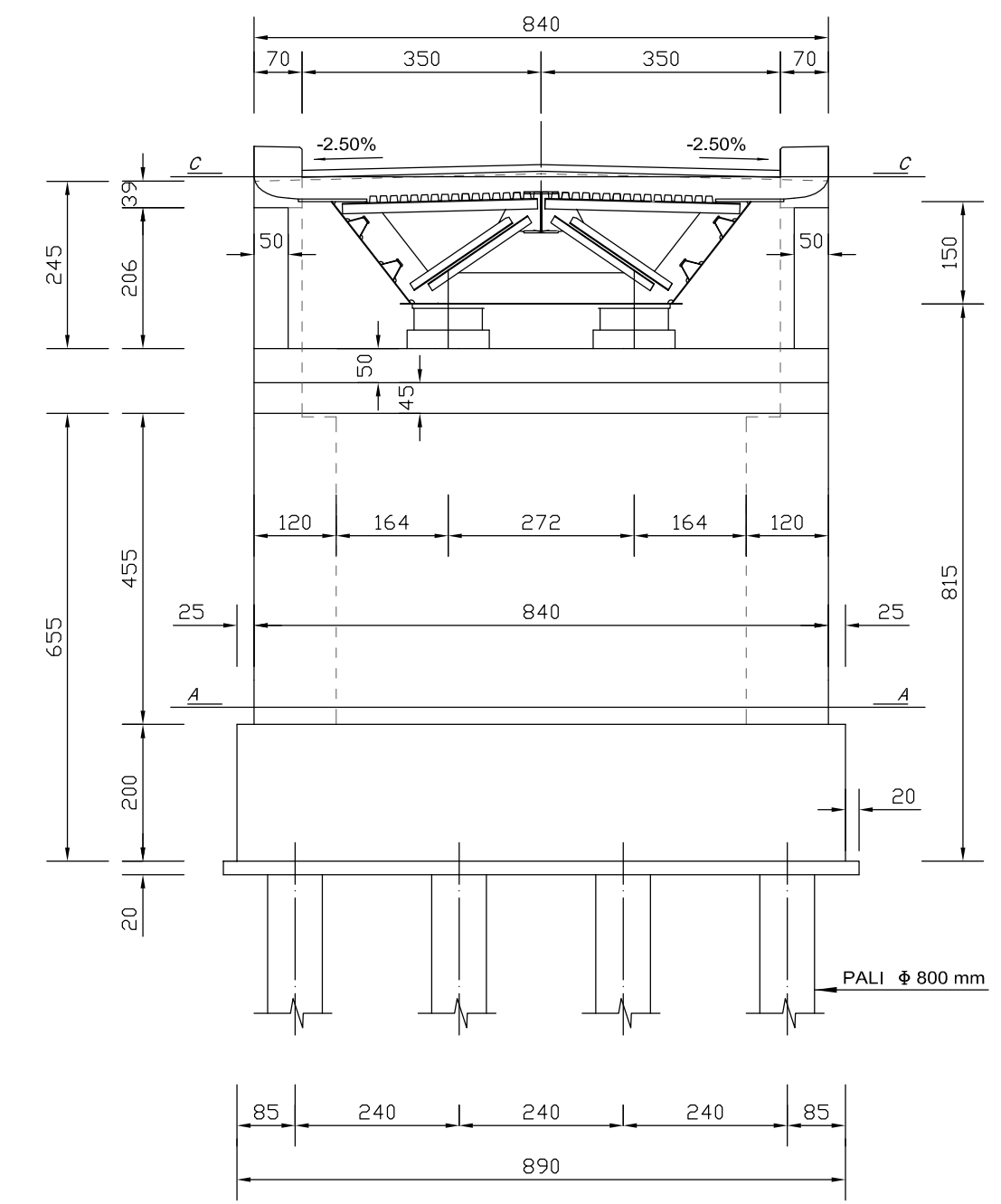


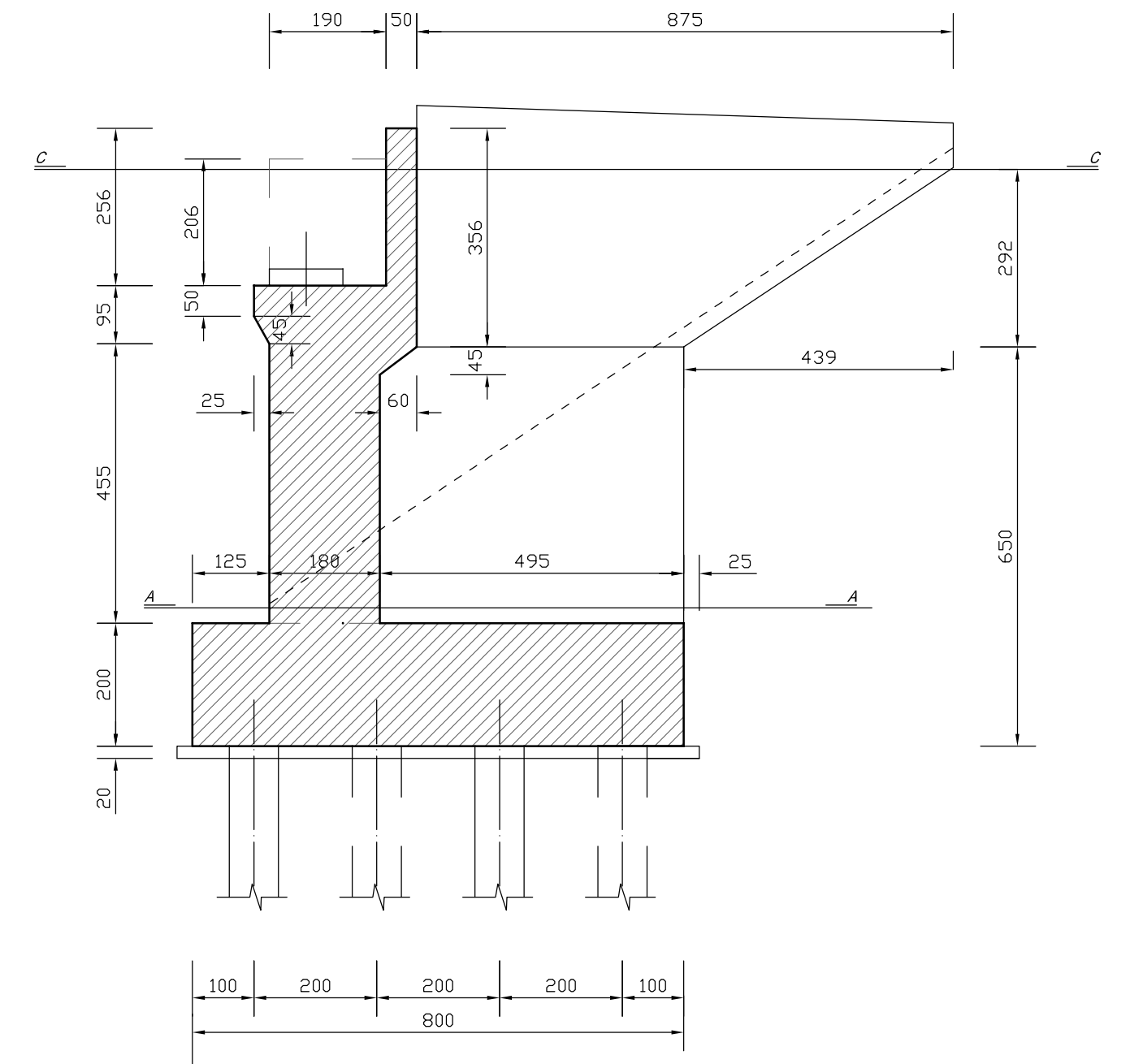
PLANIMETRIA DI PROGETTO
scala 1:200



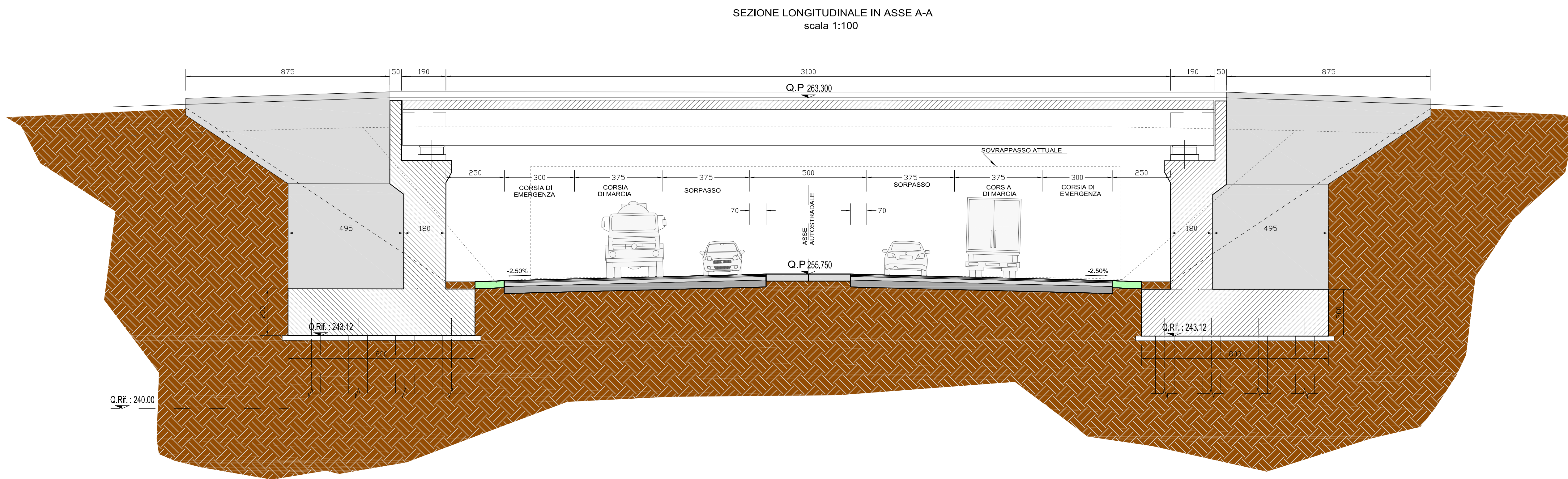
PROSPETTO SPALLA
scala 1:100



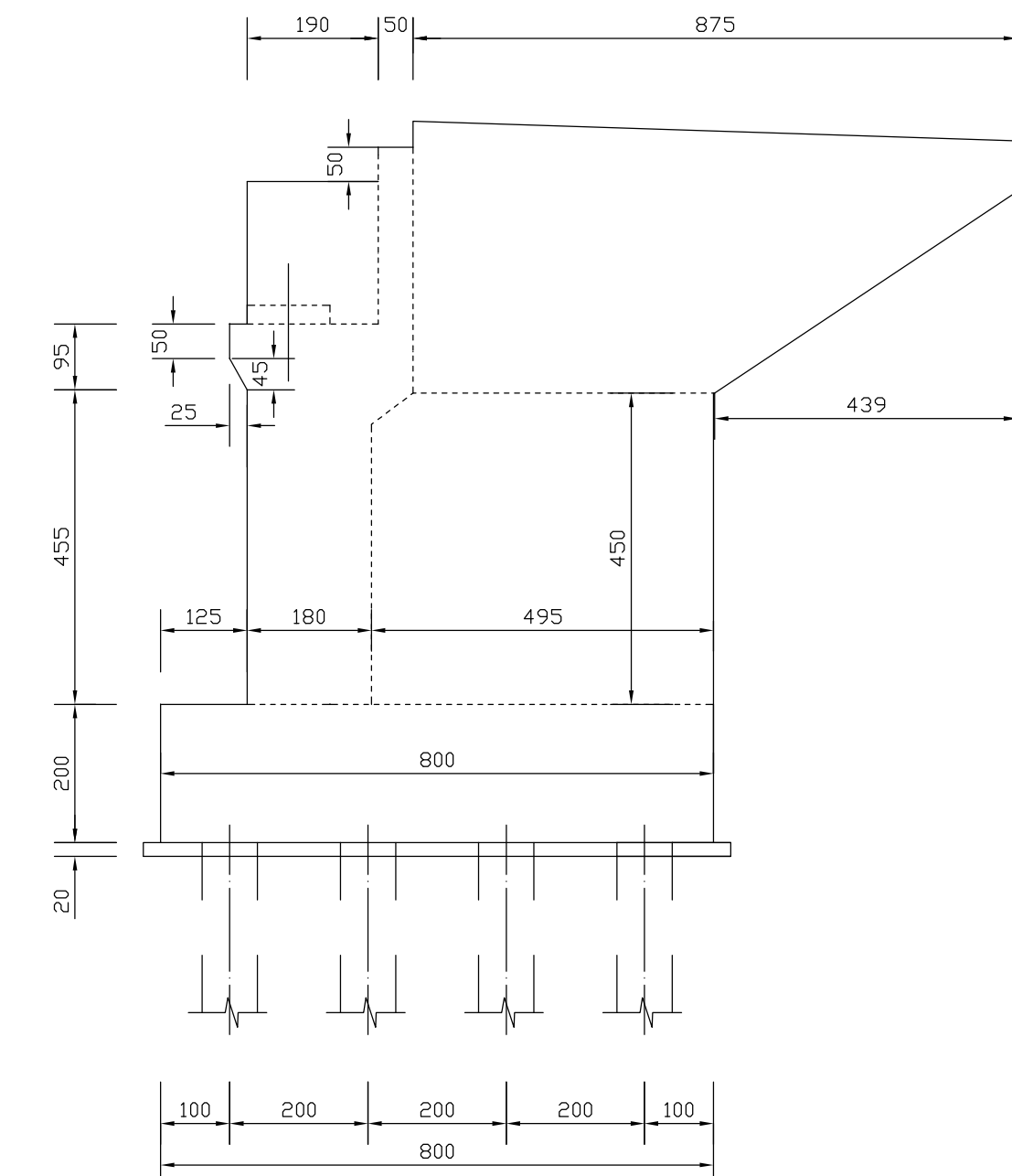
SEZIONE B - B
scala 1:100



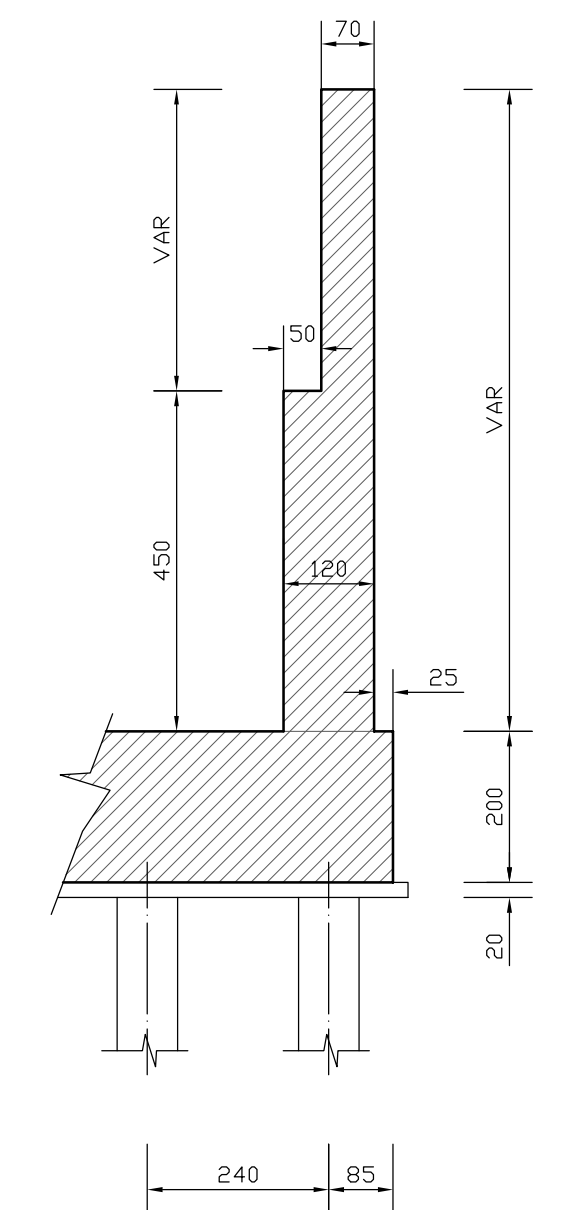
SEZIONE LONGITUDINALE IN ASSE A-A
scala 1:100



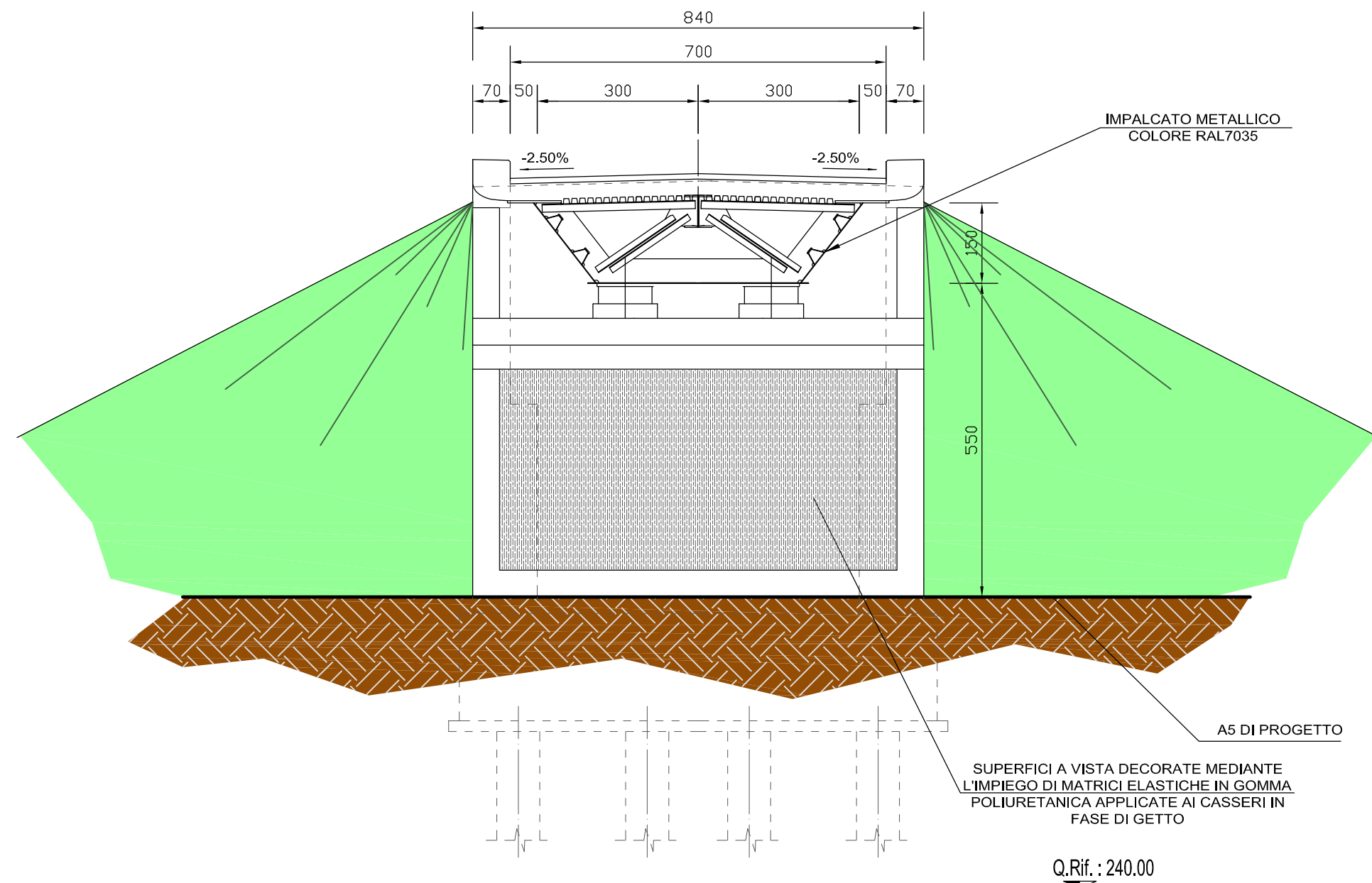
PROSPETTO LATERALE
scala 1:100



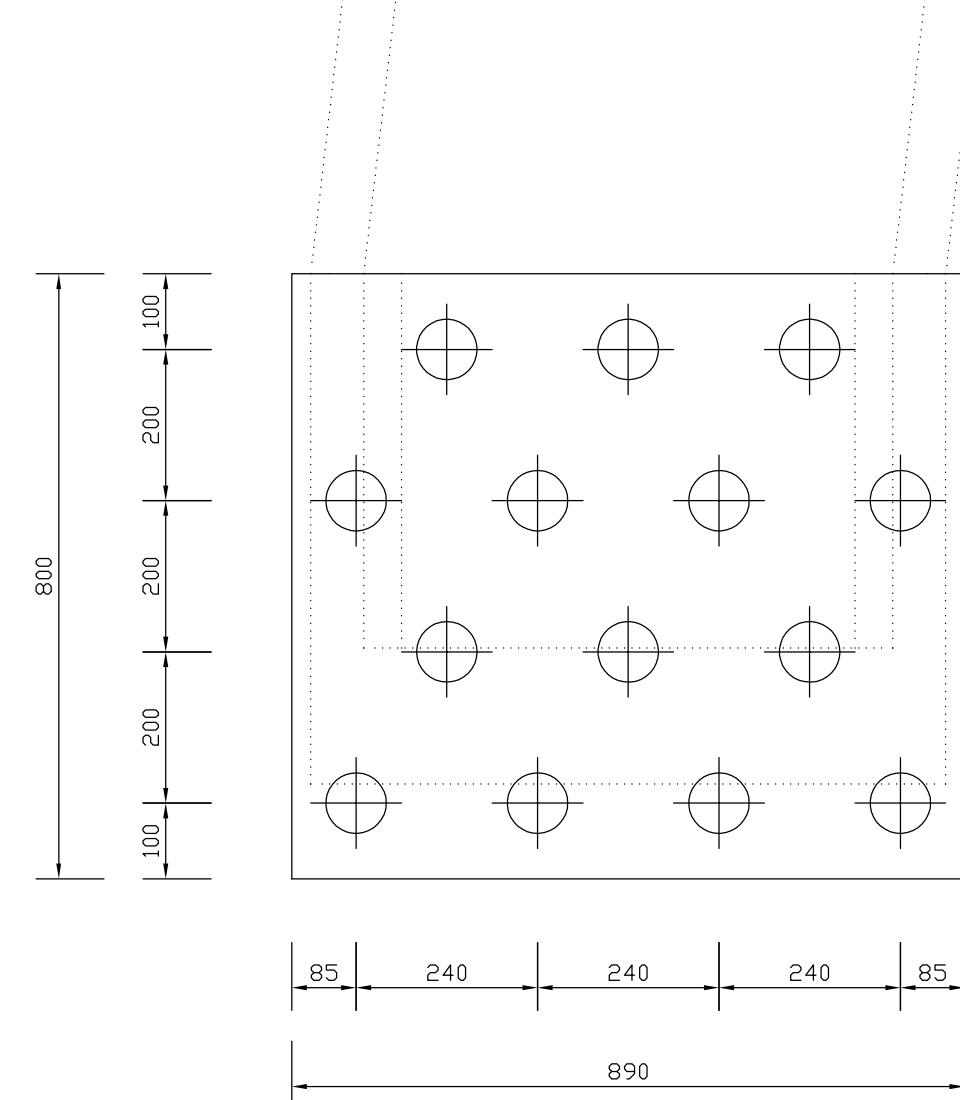
SEZIONE D - D
scala 1:100



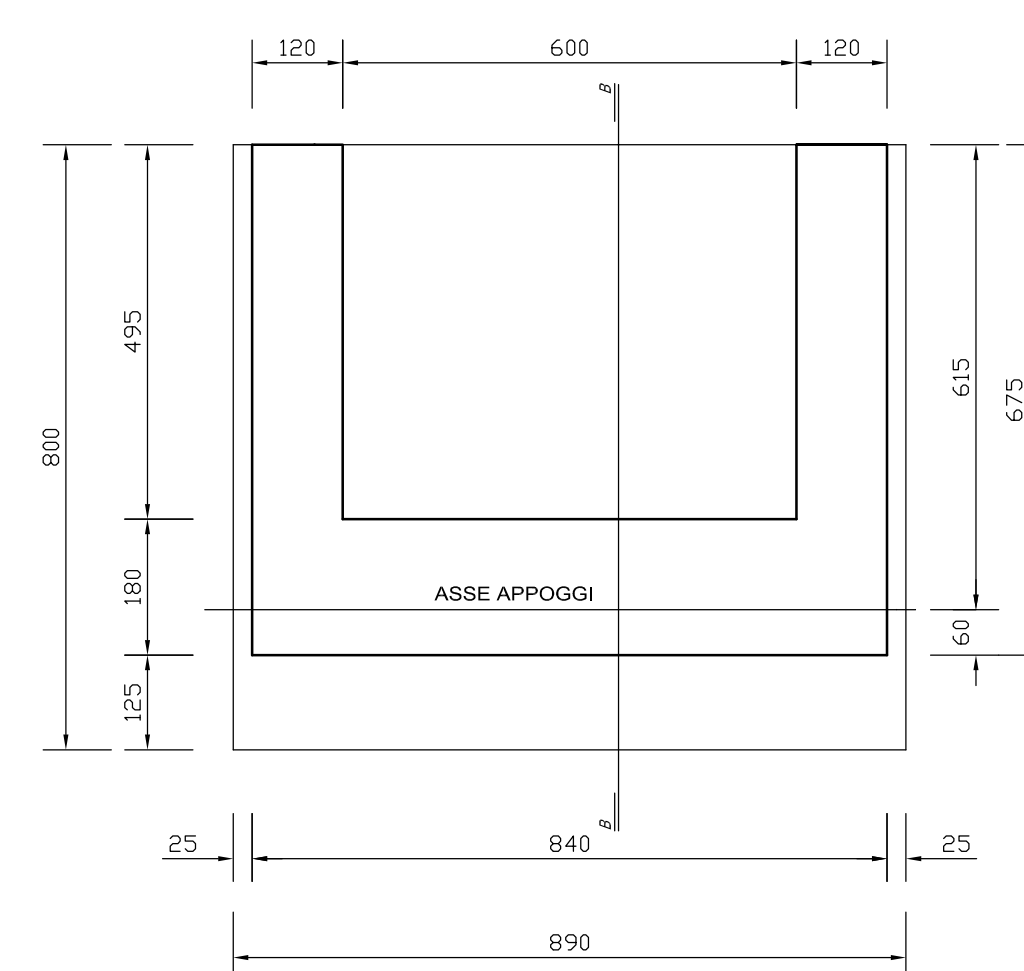
SEZIONE TRASVERSALE TIPO
scala 1:100



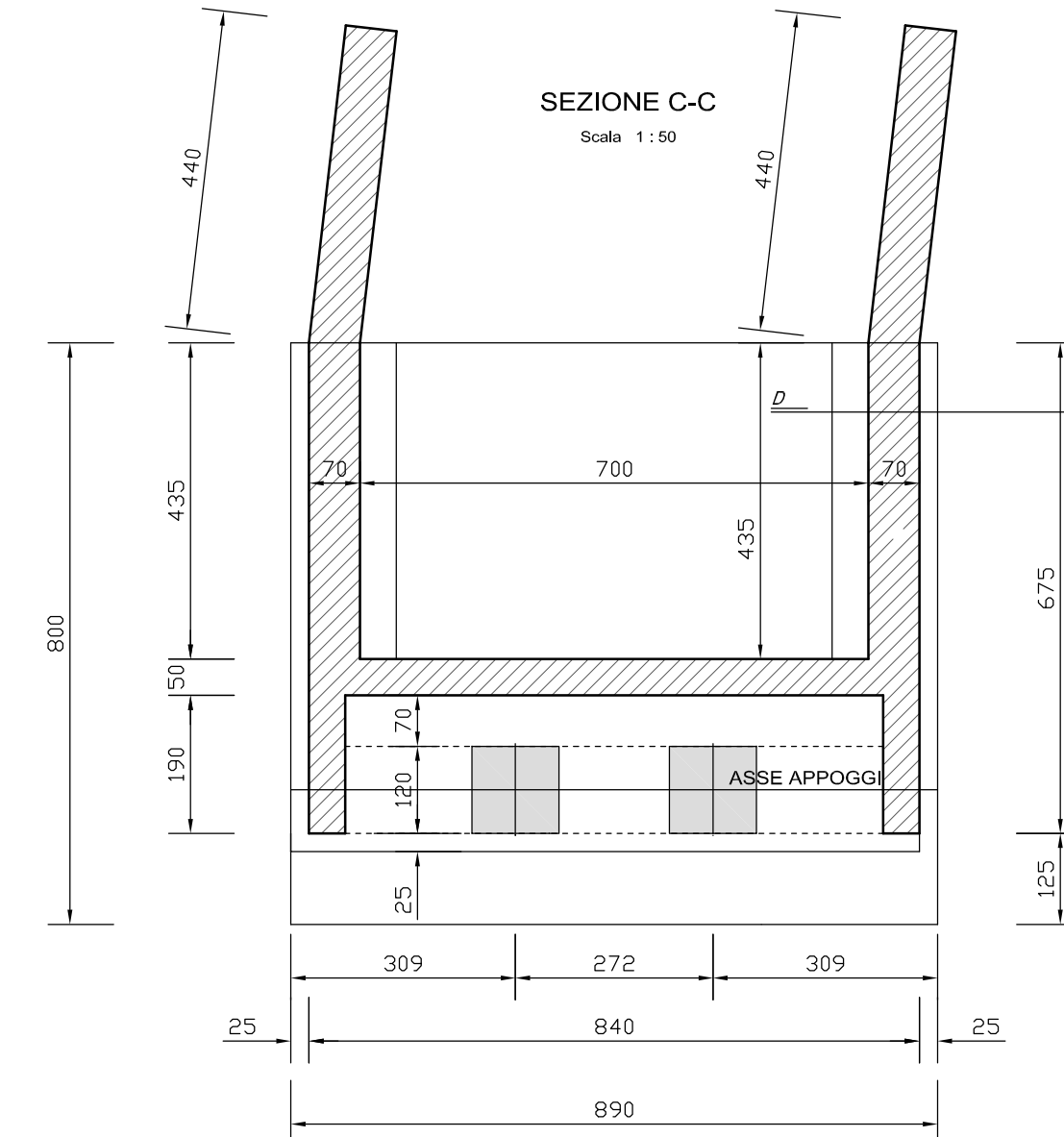
PIANTA FONDAZIONI
scala 1:100




SEZIONE A - A
scala 1:100




SEZIONE C-C
scala 1:100





TORINO - IVREA - QUINCINETTO
IVREA - SANTHIA'
SISTEMA AUTOSTRADALE
TANGENZIALE DI TORINO



VISTO per ATIVA S.p.A.
Amministratore Delegato
Dott. Ing. LUIGI CRESTA

**AUTOSTRADA A4/A5 - A5 TORINO QUINCINETTO
IVREA SANTHIA'**

**NODO IDRAULICO DI IVREA
2° FASE DI COMPLETAMENTO**

PROGETTO DEFINITIVO

**PARTE STRUTTURALE - SOVRAPPASSI E SOTTOPASSI
SOVRAPPASSO STRADA COMUNALE LESSOLO
BAIO DORA AL km 45+535
DISEGNO D'INSIEME**

IL PROGETTISTA	REDAITTO	CONTROLLATO	APPROVATO
 Il Direttore Tecnico Dott. Ing. ROBERTO PETRALI online degli Ingegneri di Milano n° 14638	IGEAS E. De Curti	IGEAS M. Barale	ATIVA ENGINEERING V. Palmisano
DATA GIUGNO 2012	REVISIONE	DATA	
SCALA VARIE			
UFFICIO	CONMESSA	N° PROG.	FASE
SSP0101A05	000PDSTR42800		